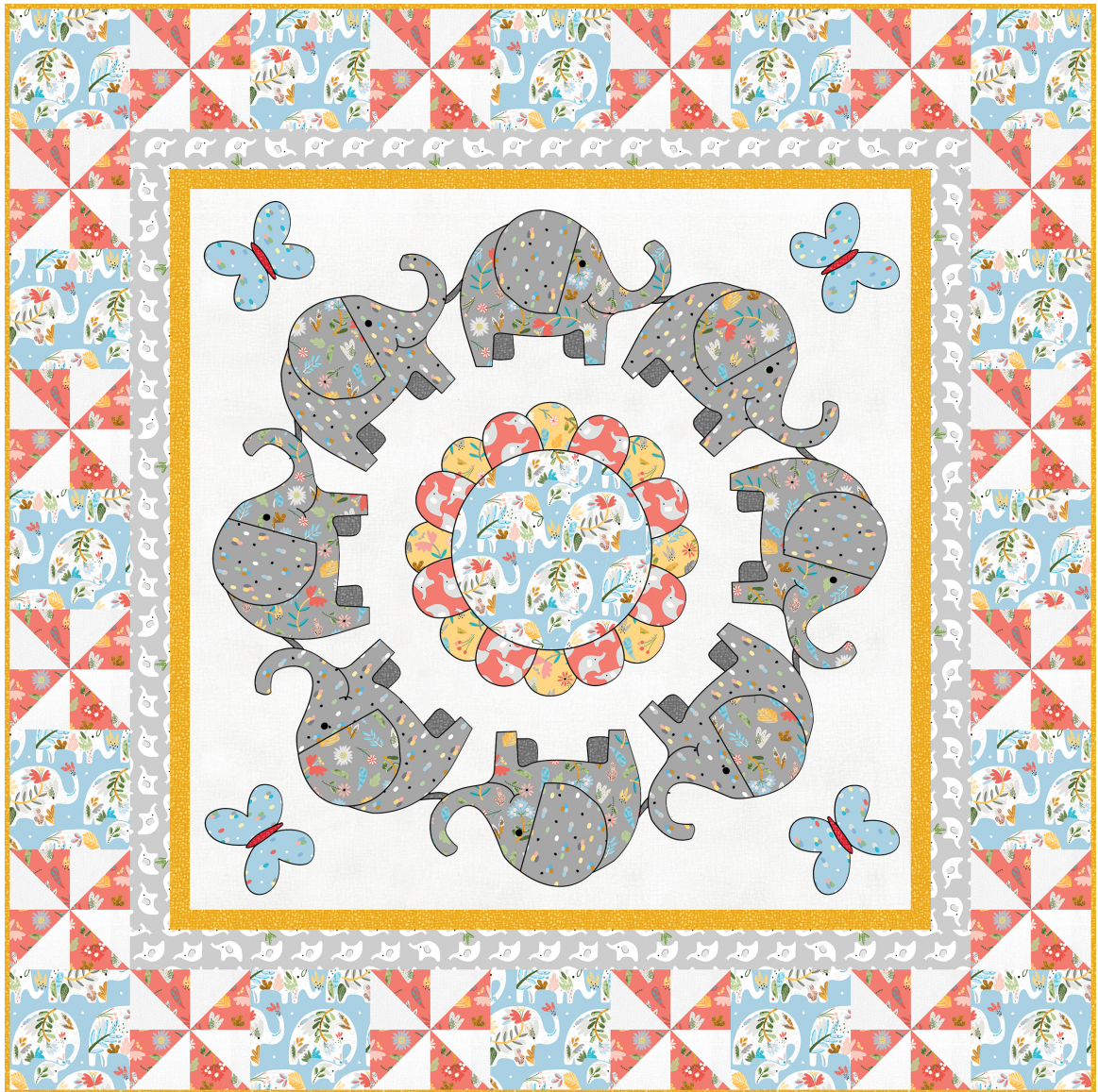


# Ring Around the Daisy

designed by Heidi Pridemore of The Whimsical Workshop  
featuring the Ellie fabric collection by Whistler Studios

QUILT SIZE: 54" x 54"



THIS IS A DIGITAL REPRESENTATION OF THE QUILT TOP, FABRIC MAY VARY.

FREE  
PROJECT

**PLEASE NOTE:** BEFORE MAKING YOUR PROJECT, CHECK FOR ANY PATTERN UPDATES AT [WINDHAMFABRICS.COM](http://WINDHAMFABRICS.COM)'S FREE PROJECTS SECTION.



# Ring Around the Daisy

KEY	FABRIC	SKU	YD	CUTTING INSTRUCTIONS
A		51357-1 blue	1	<ul style="list-style-type: none"> <li>• (3) 6-1-2" x WOF strips. Sub-cut the strips into (16) 6-1/2" squares.</li> <li>• See instructions to cut (1) Center Circle.</li> </ul>
B		51359-5 coral	1/4	<ul style="list-style-type: none"> <li>• See instructions to cut (8) Center Scallops.</li> </ul>
C		51358-4 yellow	1/4	<ul style="list-style-type: none"> <li>• See instructions to cut (8) Center Scallops.</li> </ul>
D		50087-42 white on white BEDROCK	1-5/8	<ul style="list-style-type: none"> <li>• (1) 36-1/2" x 36-1/2" square.</li> <li>• (4) 3-7/8" x WOF strips. Sub-cut the strips into (32) 3-7/8" squares.</li> </ul>
E		51360-2 grey	1/2	<ul style="list-style-type: none"> <li>• See instructions to cut (4) Elephant Bodies and (4) Elephant Ears.</li> </ul>
F		51358-2 grey	1/2	<ul style="list-style-type: none"> <li>• See instructions to cut (4) Elephant Bodies and (4) Elephant Ears.</li> </ul>
G		50087-39 pebble BEDROCK	1/8	<ul style="list-style-type: none"> <li>• See instructions to cut (8) Right Legs and (8) Left Legs.</li> <li>• See instructions to cut (8) Tails.</li> </ul>
H		51360-1 blue	1/4	<ul style="list-style-type: none"> <li>• See instructions to cut (4) Right Butterfly Wings and (4) Left Butterfly Wings.</li> </ul>
I		50087-56 candy	1/8	<ul style="list-style-type: none"> <li>• See instructions to cut (4) Butterfly Bodies.</li> </ul>
J		50087-22 honeycomb BEDROCK INCLUDES BINDING	3/4	<ul style="list-style-type: none"> <li>• (2) 1-1/2" x 36-1/2" WOF strips.</li> <li>• (2) 1-1/2" x 38-1/2" WOF strips.</li> <li><b>Binding</b></li> <li>• (6) 2-1/2" x WOF strips for the binding.</li> </ul>
K		51359-6 light grey	1/2	<ul style="list-style-type: none"> <li>• (2) 2-1/2" x 38-1/2" WOF strips.</li> <li>• (2) 2-1/2" x 42-1/2" WOF strips, piece as needed.</li> </ul>
L		51358-5 coral	5/8	<ul style="list-style-type: none"> <li>• (4) 3-7/8" x WOF strips. Sub-cut the strips into (32) 3-7/8" squares.</li> </ul>
		Backing	3-1/2	
				Batting 62" x 62"

**PROJECT DISCLAIMER:** Every effort has been made to ensure that all projects are error free. All the information is presented in good faith, however, no warranty can be given nor results guaranteed. Therefore, we assume no responsibility nor damages that may occur when referring to this pattern. When errors are brought to our attention, we make every effort to correct and post a revision as soon as possible. We suggest you check [windhamfabrics.com](http://windhamfabrics.com) for pattern updates and to test the pattern prior to making the project. Test templates first, before cutting all the pieces. Free projects are not for resale.



# Ring Around the Daisy

## Block Assembly

1. Following the manufacturer's instructions, trace the listed number of each template onto the paper side of the fusible web. Roughly cut out each template about 1/8" outside the drawn lines.
2. Press each template onto the wrong side of the fabrics as listed on the templates. Cut out each template on the drawn lines.
3. Refer to **Figure 1** to arrange and press the assorted elephant components, butterflies, scallops and center circle onto the **D** 36 1/2" square.
4. Finish the raw edges of each shape with a decorative stitch such as a buttonhole or satin stitch to make the **Center Block**.

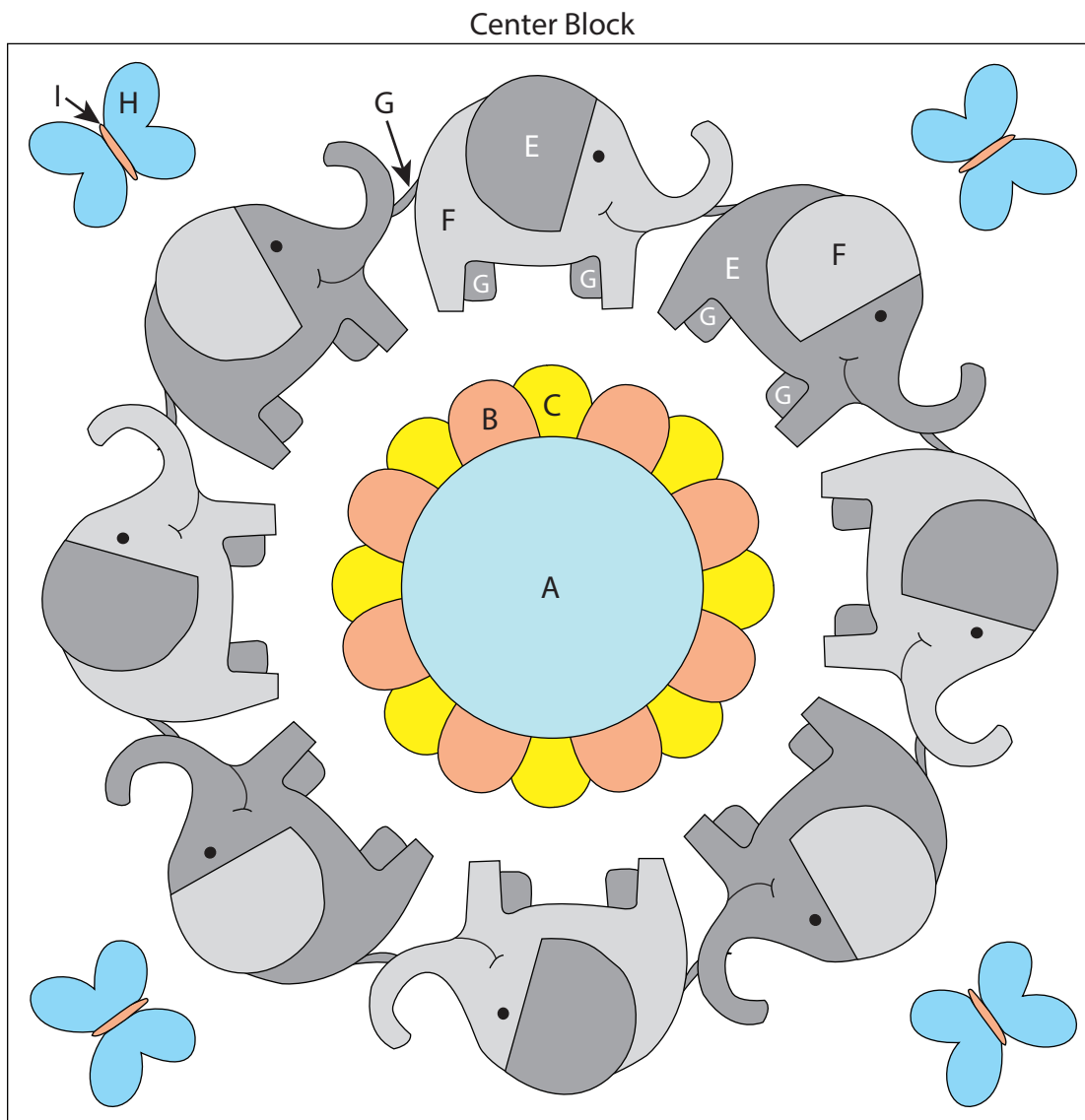


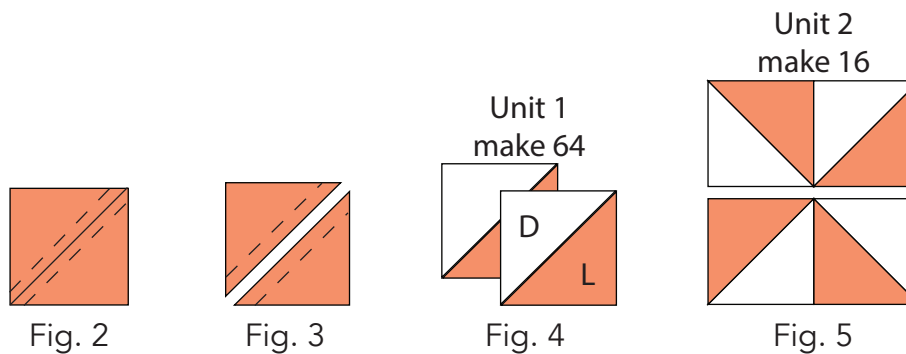
Fig. 1



# Ring Around the Daisy

5. Place (1) **L** 3-7/8" square on top of (1) **D** 3-7/8" square, right sides together. Draw a line across the diagonal of the top square (**Fig. 2**). Sew 1/4" away from each side of the drawn diagonal line (**Fig. 2**). Cut the (2) squares apart on the drawn diagonal line (**Fig. 3**) to make (2) half-square triangles. Trim the half-square triangles to measure 3-1/2" square to make (2) **Unit 1** squares (**Fig. 4**). Repeat to make (64) **Unit 1** squares total.

6. Sew (4) **Unit 1** squares together in a 2 x 2 matrix to make (1) **Unit 2** square (**Fig. 5**). Pay attention to the orientation of the units. Repeat to make (16) **Unit 2** squares total.



## Quilt Top Assembly

*(Refer to the Quilt Diagram while assembling the quilt top.)*

7. Sew (1) **J** 1-1/2" x 36-1/2" strip to each side of the **Center Block**. Sew (1) **J** 1-1/2" x 38-1/2" strip to the top and to the bottom of the **Center Block**.

8. Sew (1) **K** 2-1/2" x 38-1/2" strip to each side of the **Center Block**. Sew (1) **K** 2-1/2" x 42-1/2" strip to the top and to the bottom of the **Center Block**.

9. Sew (4) **Unit 2** squares and (3) **A** 6-1/2" squares together, alternating them. Repeat to make a second strip. Sew (1) strip to each side of the **Center Block**.

10. Sew (5) **A** 6-1/2" squares and (4) **Unit 2** squares together, alternating them. Repeat to make a second strip. Sew the strips to the top and to the bottom of the **Center Block** to make the quilt top.

## Finishing

11. Layer and quilt as desired.

12. Sew the (6) **J** 2-1/2" x WOF strips together end-to-end with 45-degree seams to make the binding. Fold this long strip in half lengthwise with wrong sides together and press.

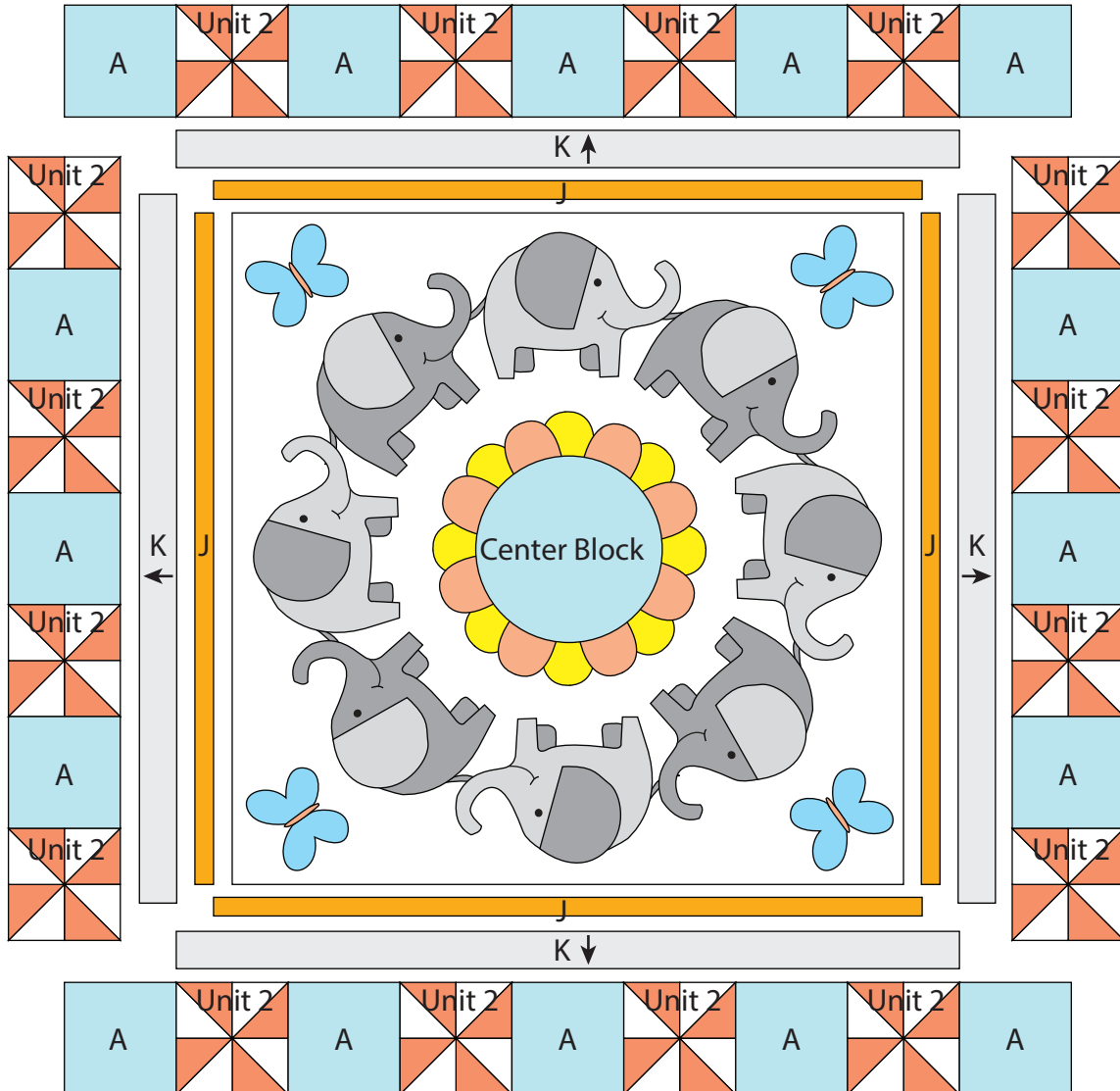
13. Bind as desired.



# Ring Around the Daisy

SIZE: 54" X 54"

## Quilt Diagram

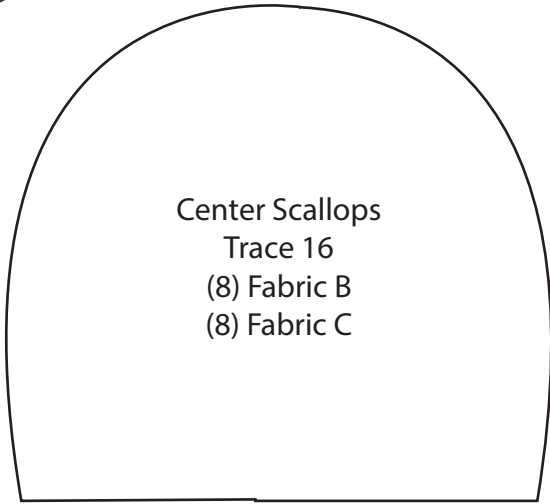




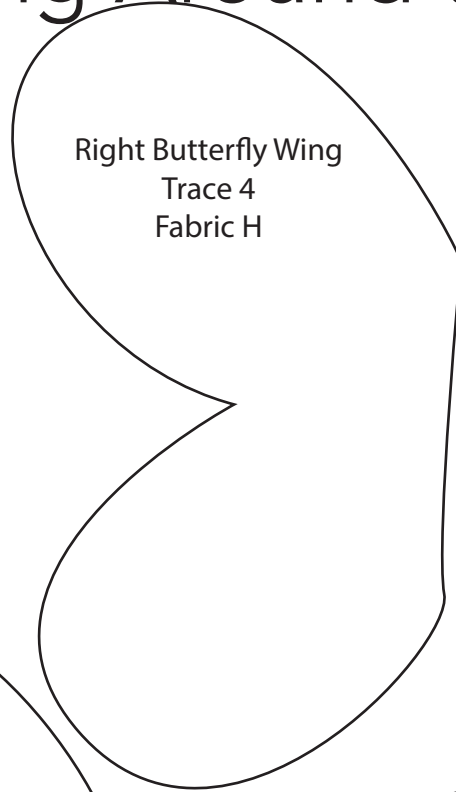
Templates

# Ring Around the Daisy

100% Reversed Templates

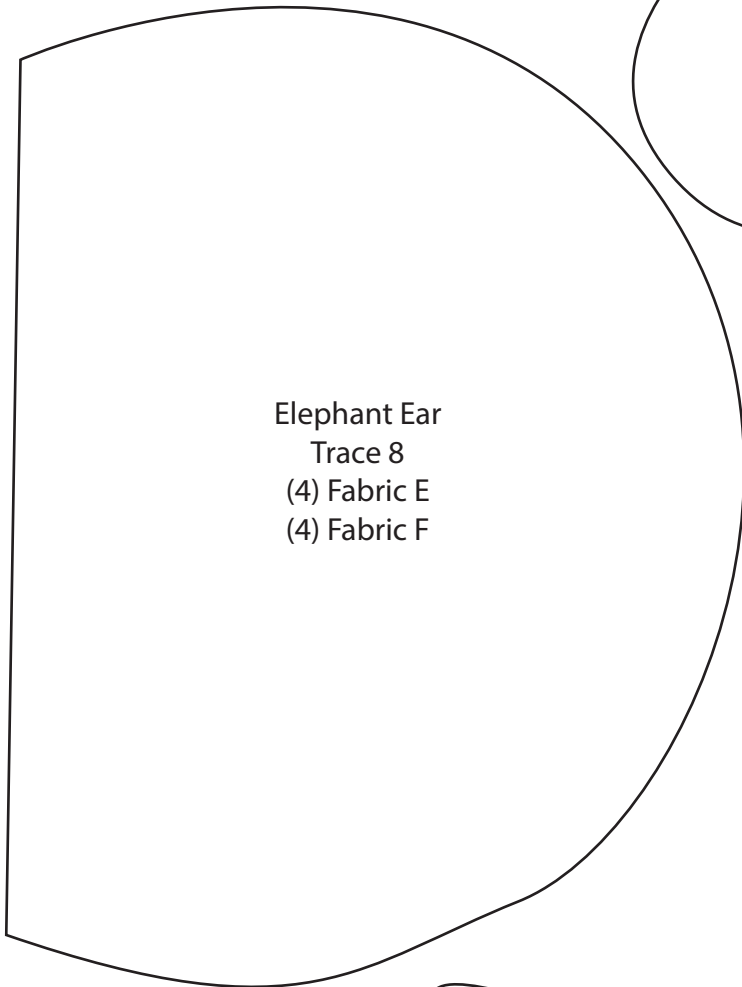


Center Scallops  
Trace 16  
(8) Fabric B  
(8) Fabric C

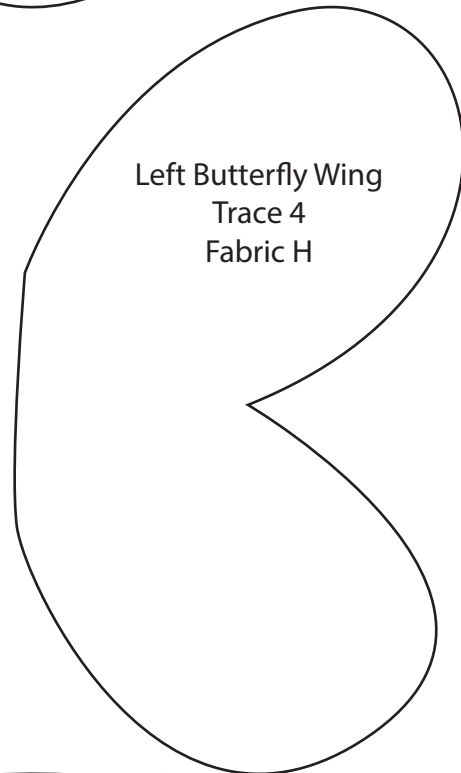


Right Butterfly Wing  
Trace 4  
Fabric H

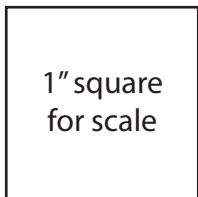
Butterfly Body  
Trace 4  
Fabric I



Elephant Ear  
Trace 8  
(4) Fabric E  
(4) Fabric F



Left Butterfly Wing  
Trace 4  
Fabric H



1" square  
for scale



Right Elephant  
Leg  
Trace 8  
Fabric G



Left Elephant  
Leg  
Trace 8  
Fabric G



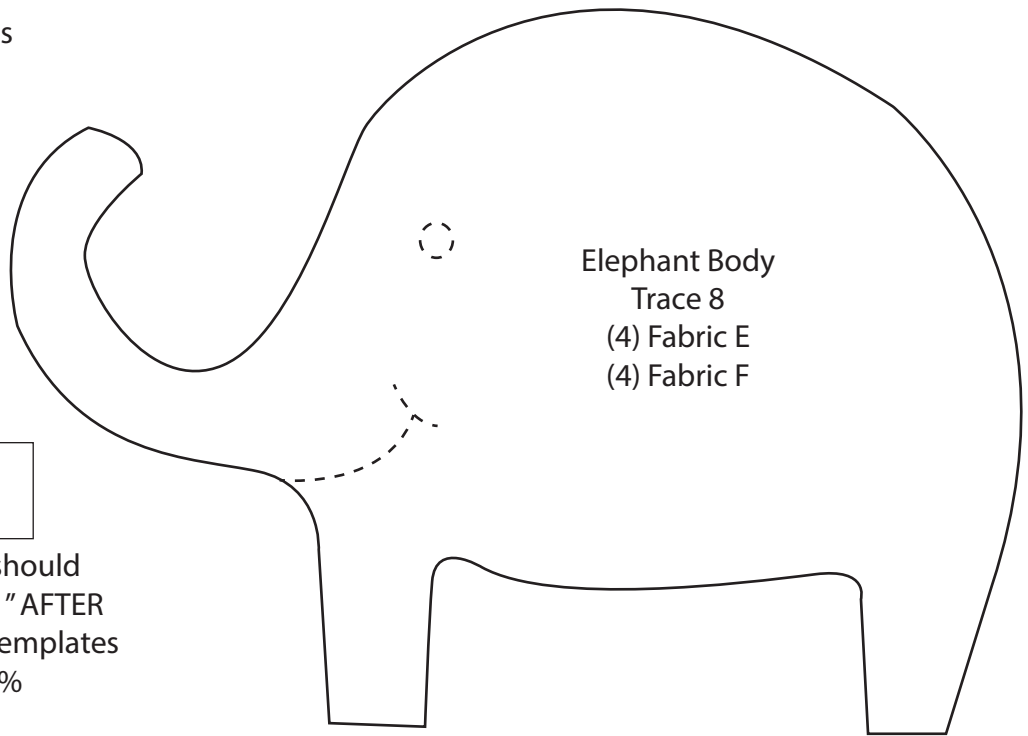
Elephant Tail  
Trace 8  
Fabric G



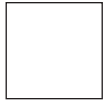
# Ring Around the Daisy

## Templates

Reversed Templates  
ENLARGE 200%



Elephant Body  
Trace 8  
(4) Fabric E  
(4) Fabric F



Square should  
measure 1" AFTER  
enlarging templates  
200%



Center Circle  
Trace 1  
Fabric A